



# Production and Price Trends 1960-2011

November 2012 edition

## Contents

---

Table 1	.....	Areas, Production and Prices 1960-2012
Figure 1	.....	Planted Area and Number of Growers 1960-2012
Figure 2	.....	Planted Area and Turnover per Grower 1970-2011
Figure 3	.....	Yield per ha and total production 1960-2011
Figure 4	.....	Ex Farm Price Trends 1970-2011
Figure 5	.....	Forecasting Price from Production
Figure 6	.....	Price Influence on Planted Area
Figure 7	.....	Free Market Weekly Average Price Index 2000-2011
Figure 8	.....	Indexed comparison of trends 1970-2011

*The Potato Council's statistical datasheet of areas, production and prices is more than a simple curiosity. It provides useful strategic information for long-term investment, and assists in understanding the dynamics of production, areas and prices in ways that may importantly affect your business decisions for the next season.*



Prepared by the Market Intelligence Division of AHDB

Additional copies can be downloaded in PDF format from <http://www.potato.org.uk>

For further information contact Jim Davies on +44 024 7647 8786

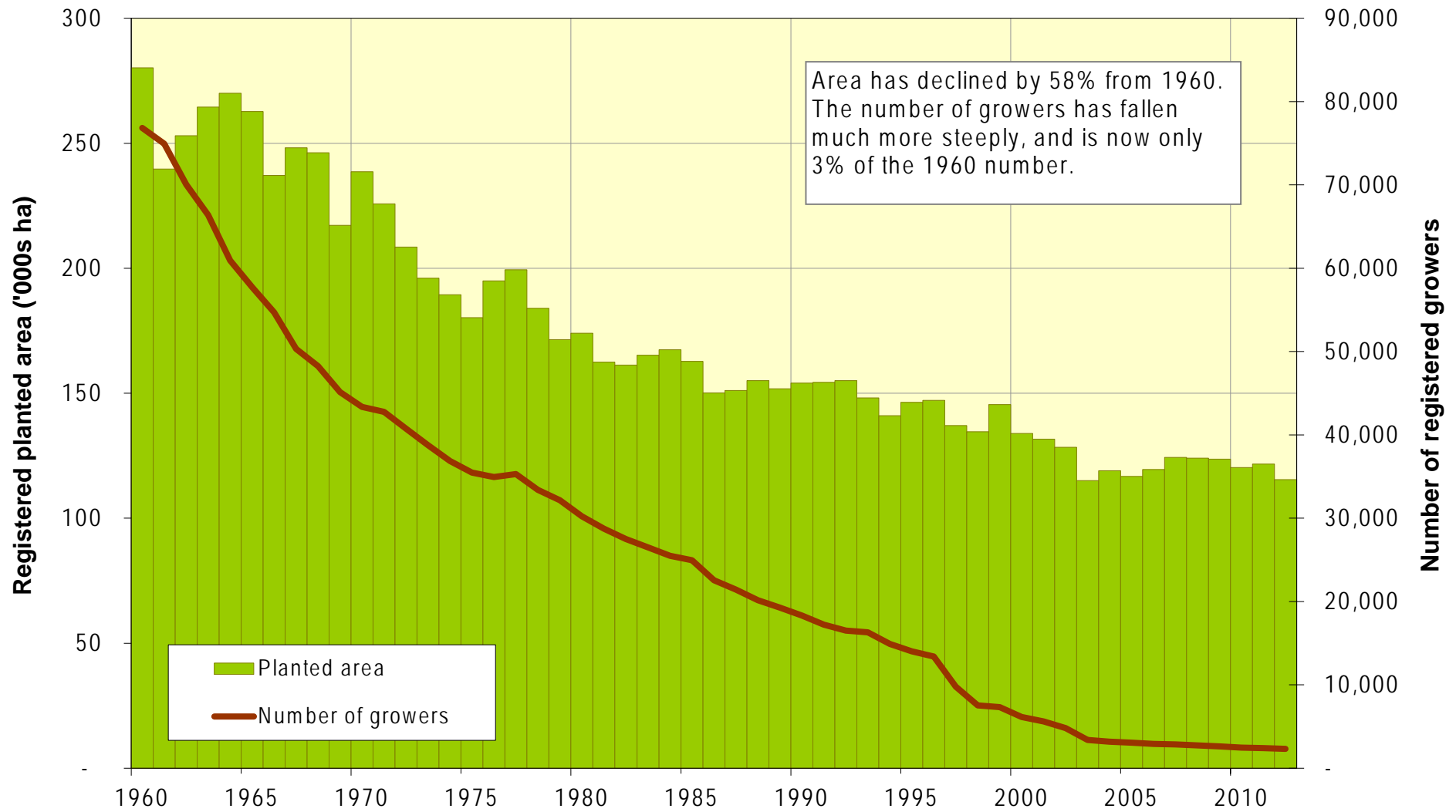
Copyright (c) Agriculture & Horticulture Development Board, 2012.

## Table 1 : Areas, production and prices 1960-2012

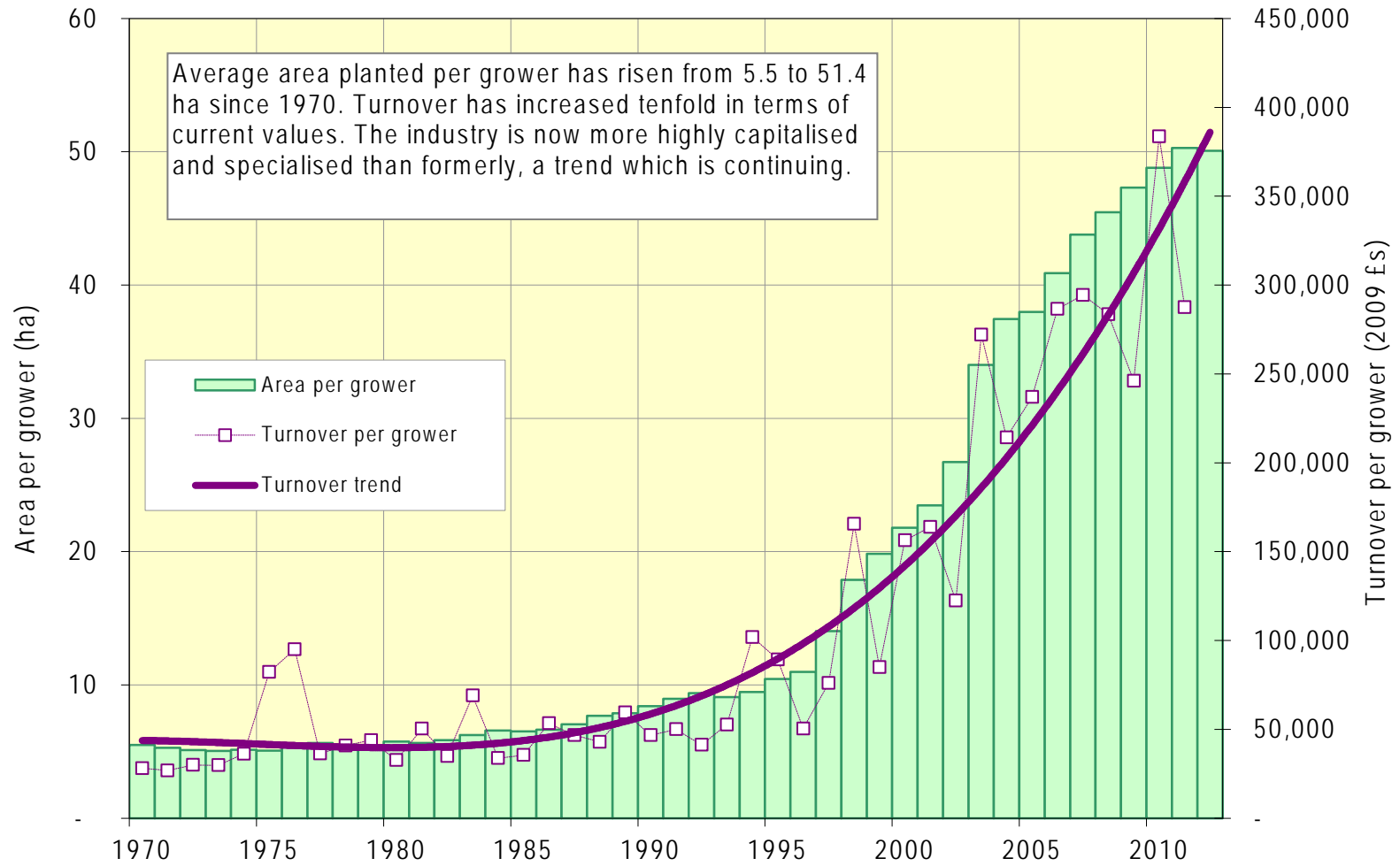
Year	Registered growers	Registered area, '000 ha	Total area*, '000 ha	Area per grower, ha	Maincrop Net Yield tonnes/ha	Total production, '000s tonnes	Average price ware £/tonnes	Retail Price Index	Avg £/tonnes 2010 £s	Gross turnover £ per Grower
1960	76825	280.2	287.2	3.65	22.8	6,558				
1961	74933	239.6	245.6	3.20	23.3	5,728				
1962	70056	253.0	259.4	3.61	23.6	6,109				
1963	66380	264.4	271.0	3.98	22.2	6,024				
1964	60940	270.0	276.7	4.43	23.5	6,514				
1965	57725	262.7	269.2	4.55	26.2	7,065				
1966	54700	237.1	243.0	4.33	25.1	6,104				
1967	50310	248.1	254.3	4.93	26.2	6,674				
1968	48239	246.2	252.4	5.10	25.4	6,402				
1969	45130	217.2	222.6	4.81	26.1	5,820				
1970	43346	238.6	244.6	5.51	28.9	7,076	14.27	19	172.18	28,107
1971	42756	225.7	231.4	5.28	30.3	7,021	14.82	20	163.45	26,840
1972	40756	208.5	213.7	5.11	29.1	6,214	19.08	22	196.48	29,957
1973	38753	196.0	200.9	5.06	32.4	6,517	18.76	24	176.91	29,751
1974	36872	189.4	194.1	5.14	33.3	6,469	25.40	28	206.49	36,227
1975	35478	180.2	184.7	5.08	33.2	4,287	103.95	34	680.40	82,217
1976	34938	194.9	199.8	5.58	22.2	4,429	133.46	40	749.83	95,055
1977	35286	199.4	204.3	5.65	29.9	6,108	43.19	46	209.55	36,273
1978	33387	183.9	188.5	5.51	36.7	6,917	43.99	50	197.07	40,829
1979	32149	171.4	175.7	5.33	34.6	6,075	58.82	57	232.37	43,910
1980	30225	174.0	178.3	5.76	37.2	6,631	44.43	67	148.75	32,634
1981	28760	162.4	166.5	5.65	34.8	5,794	83.51	75	249.86	50,336
1982	27498	161.3	165.3	5.86	39.6	6,539	53.40	81	147.12	34,984
1983	26499	165.2	169.3	6.23	32.6	5,517	125.75	85	331.21	68,956
1984	25480	167.4	171.6	6.57	40.6	6,965	49.26	89	123.57	33,777
1985	24948	162.7	166.8	6.52	39.4	6,567	57.02	95	134.81	35,485
1986	22565	150.1	153.8	6.65	39.6	6,087	86.52	98	197.83	53,364
1987	21439	151.1	154.9	7.05	41.0	6,358	71.85	102	157.66	46,756
1988	20155	155.1	158.9	7.69	41.5	6,590	62.55	107	131.20	42,899
1989	19266	151.8	155.6	7.88	38.4	5,973	99.09	115	192.00	59,525
1990	18331	154.1	157.9	8.40	39.3	6,198	78.20	127	138.01	46,662
1991	17234	154.4	158.2	8.96	38.1	6,032	85.70	134	142.90	50,015
1992	16512	155.0	158.9	9.39	47.1	7,481	56.69	139	91.00	41,228
1993	16308	148.2	151.9	9.08	44.8	6,808	79.52	141	126.10	52,644
1994	14900	141.0	144.5	9.46	43.3	6,263	156.86	145	242.39	101,883
1995	14022	146.3	150.0	10.44	40.8	6,120	137.12	150	204.67	89,326
1996	13395	147.1	150.8	10.98	46.0	6,941	66.46	153	97.32	50,425
1997	9772	137.1	146.4	14.03	46.8	6,853	76.29	158	108.31	75,955
1998	7530	134.6	142.8	17.88	43.2	6,171	147.16	163	201.99	165,545
1999	7331	145.5	155.6	19.85	44.0	6,843	67.35	165	91.05	84,988
2000	6143	133.9	146.2	21.80	41.0	5,993	122.00	170	160.18	156,273
2001	5606	131.6	146.4	23.47	43.8	6,410	111.06	173	143.29	163,839
2002	4804	128.4	138.7	26.73	48.2	6,683	69.30	176	87.94	122,336
2003	3381	115.0	124.8	34.01	46.6	5,812	128.32	181	158.26	272,055
2004	3177	119.0	130.9	37.45	45.9	6,009	94.57	187	113.26	214,216
2005	3073	116.7	125.9	37.99	46.1	5,805	107.69	192	125.42	236,907
2006	2922	119.5	127.2	40.89	43.4	5,528	134.17	198	151.44	286,519
2007	2838	124.3	130.8	43.79	41.4	5,409	142.71	207	154.45	294,375
2008	2727	124.0	130.2	45.47	45.7	5,946	124.92	215	130.04	283,537
2009	2612	123.6	130.2	47.32	47.5	6,192	99.23	214	103.83	246,132
2010	2465	120.3	126.9	48.80	46.1	5,849	161.67	224	161.67	383,614
2011	2419	121.6	128.4	50.29	47.4	6,090	120.12	235	114.20	287,518
2012	2306	115.4	121.8	50.07	37.4	4,561				

2012 data are provisional estimates as at 18 October 2012

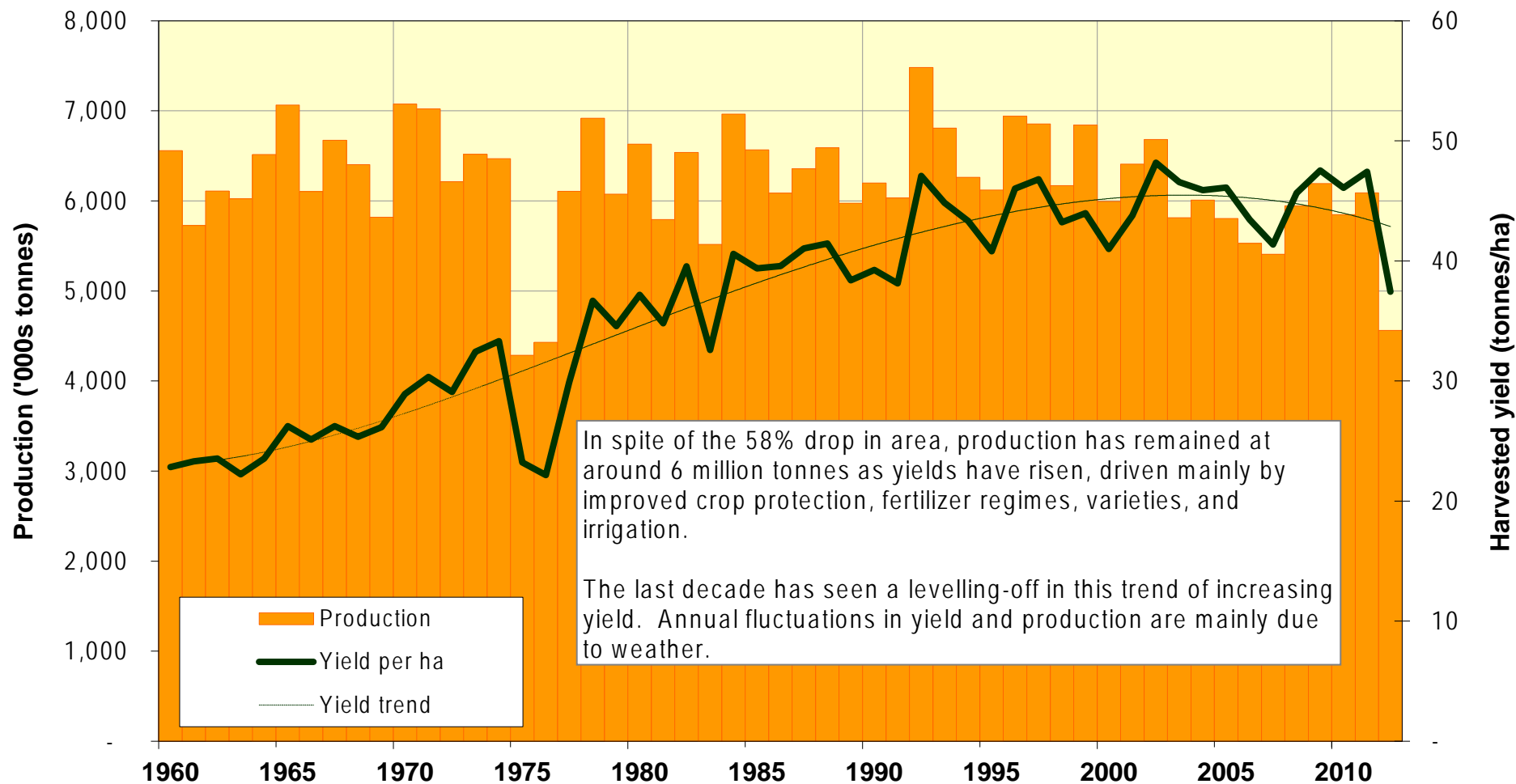
**Figure 1 : Trends in planted area and number of growers 1960-2012**



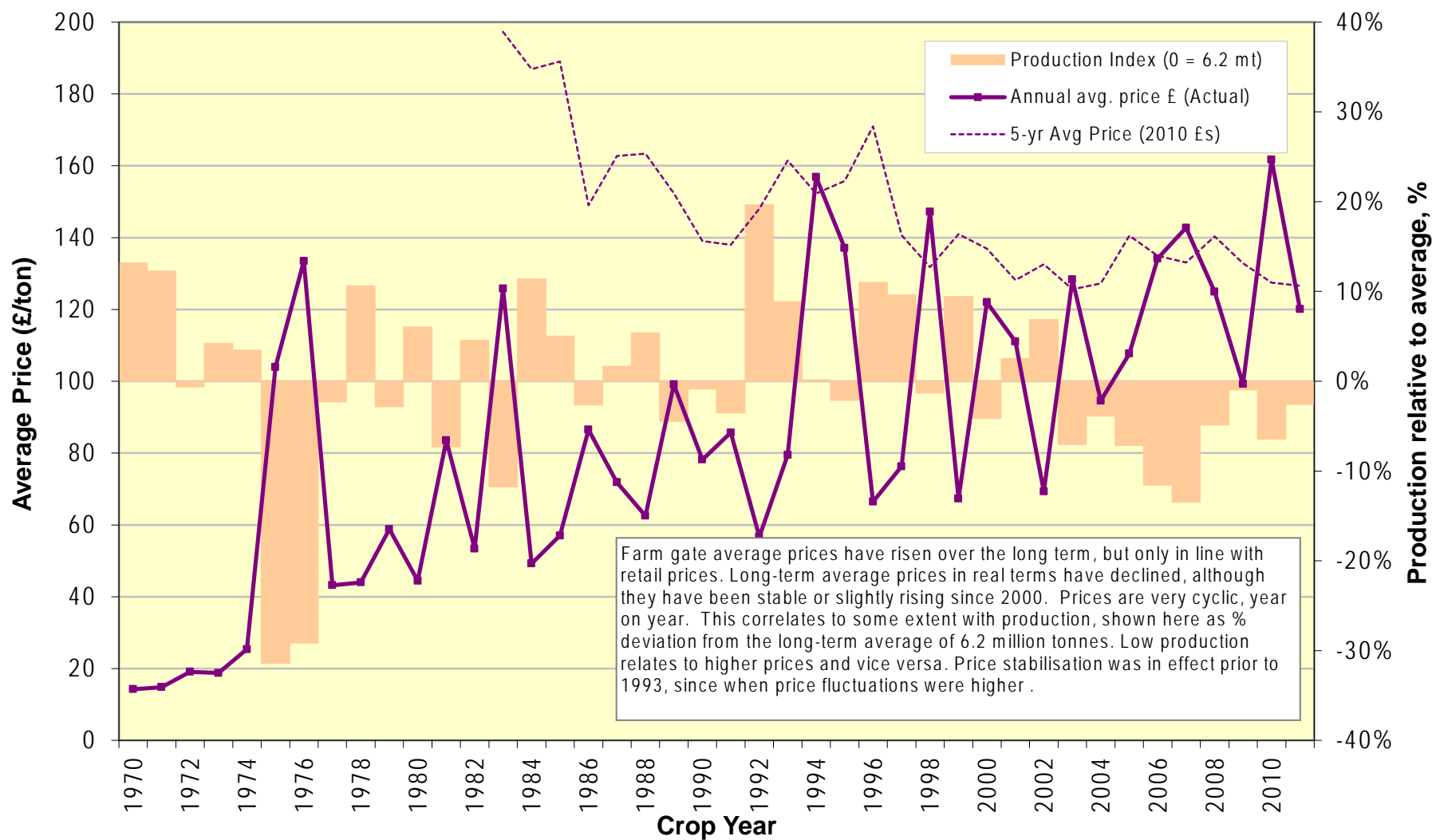
**Figure 2 : Planted Area and Turnover per Grower 1970-2012**



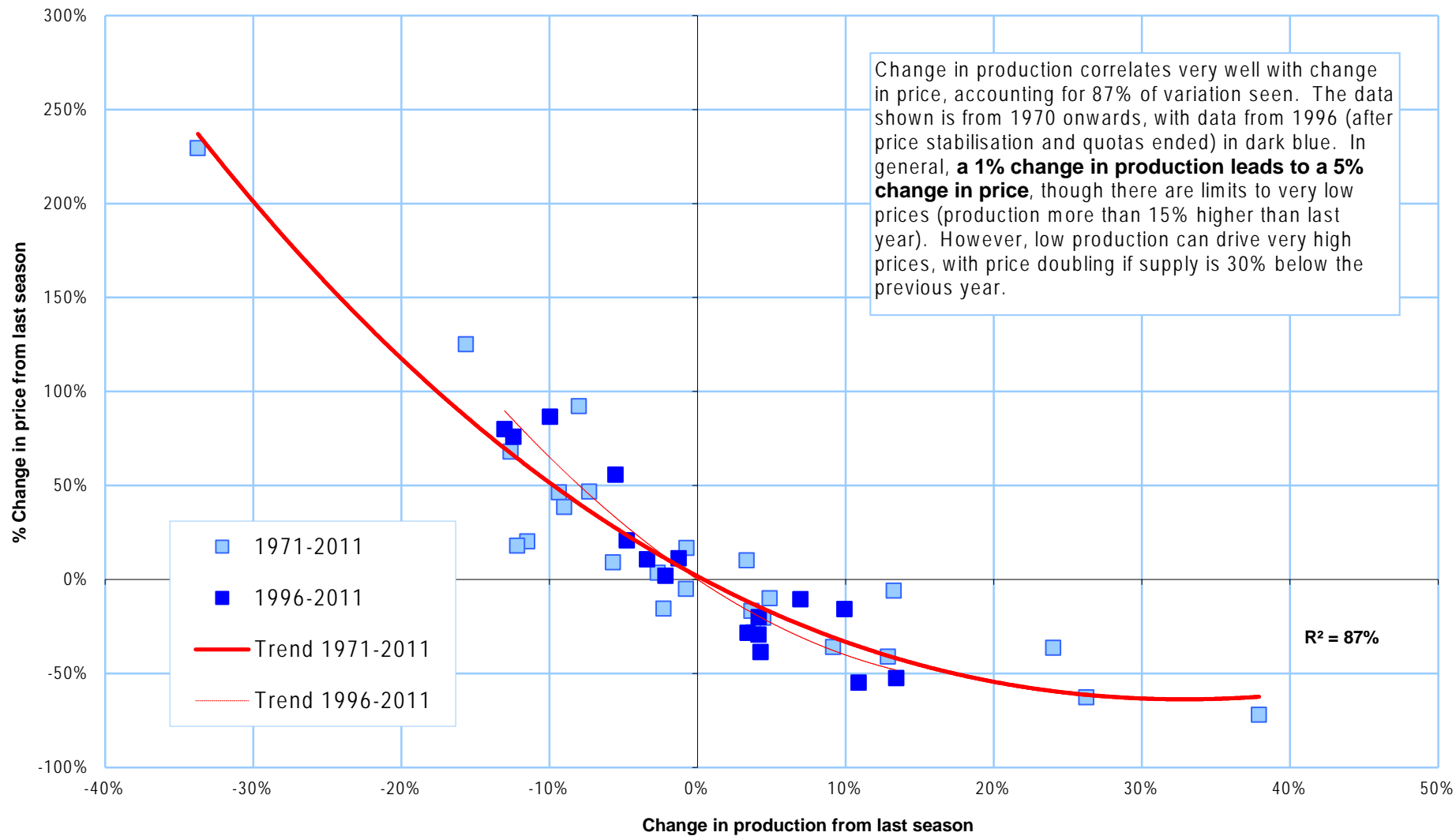
**Figure 3 : Yield per ha and total production 1960-2012**



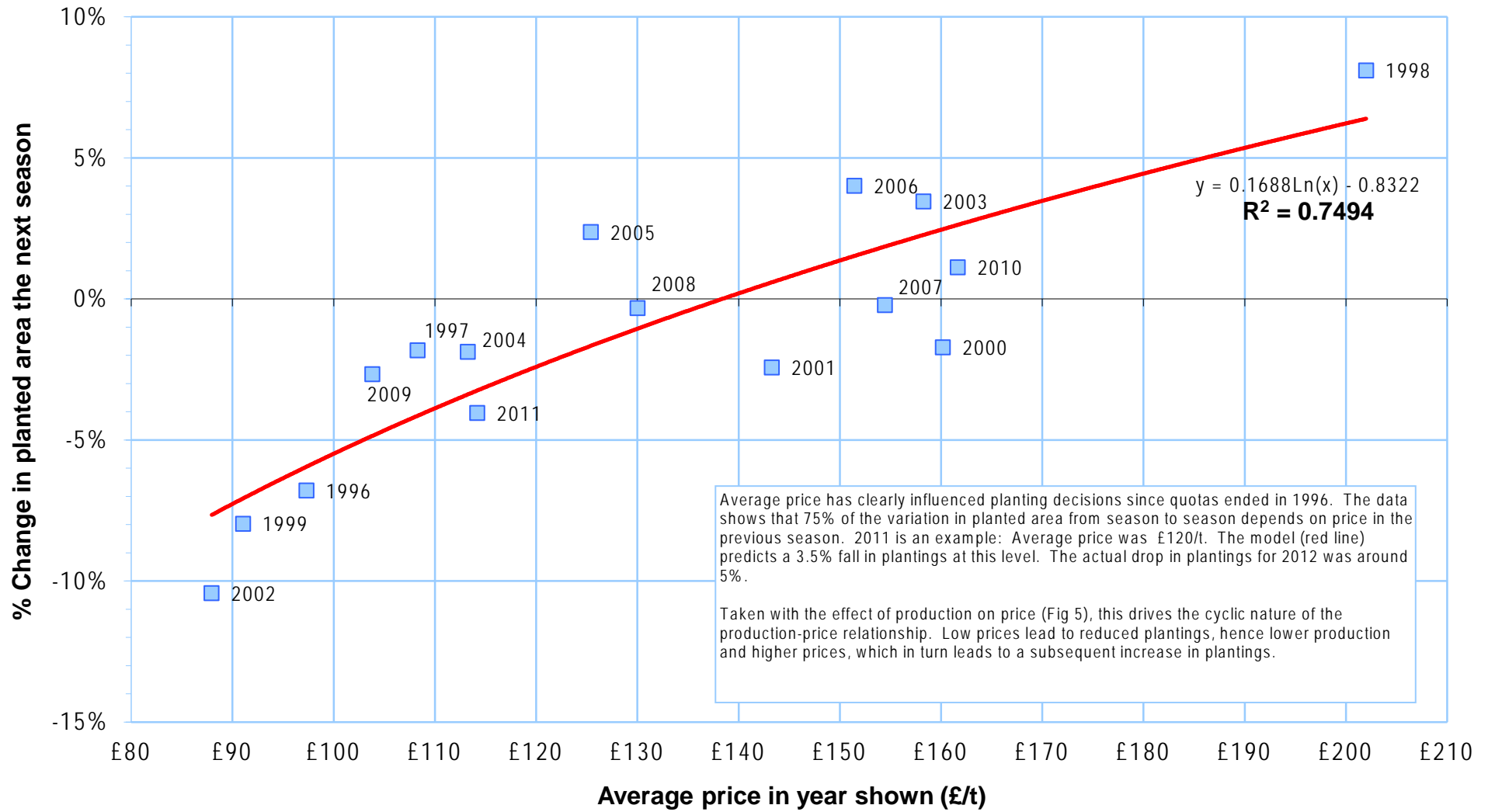
**Figure 4 : Ex-farm price trends 1970-2011**



### Figure 5 : Forecasting price from production



### Figure 6 : Price Influence on Planted Area







# Figure 8 : Indexed comparison of trends 1970-2011

*By indexing values relative to 1970, several trends can be compared on one chart on the same scale.*

